

MELLOTT®

TECHNICAL DATA – MC OTR (OVER-THE-ROAD) – 80'-100'



NOTE: Model MC3680-OTR Shown

CONVEYOR

- 30HP, 350 FPM, 36" BW, 80'-100' Long Conveyor
- 42" Deep Truss Frame Construction
- 18" CEMA Rated Drum Head Pulley w/ 1/2" Herringbone Lagging
- 18" CEMA Rated Wing Tail Pulley
- Dodge TAII Class II Reducer
- CEMA C5 Idlers
- Mellott manufactured manual 18" Screw Take-up
- Dodge SCM Bearings
- 3-PLY, 330 PIW Conveyor Belting w/ 1/16" x1/4" Covers w/ Flexco Mechanical Splice
- Conveyor Fully Assembled Prior to Shipping
- Belt Cleaner

LOADING HOPPER

- 10'-0" Length
- Rubber Flashing
- Simple Installation
- Inside of Skirts = 2/3 BW

SUPPORTS

- Fixed Rear Booms
- Adjustable Front Boom 8°-18°
- Tubular Axle Assembly
- Swivel Wheels
- Tail-end Pivot Anchor Plate

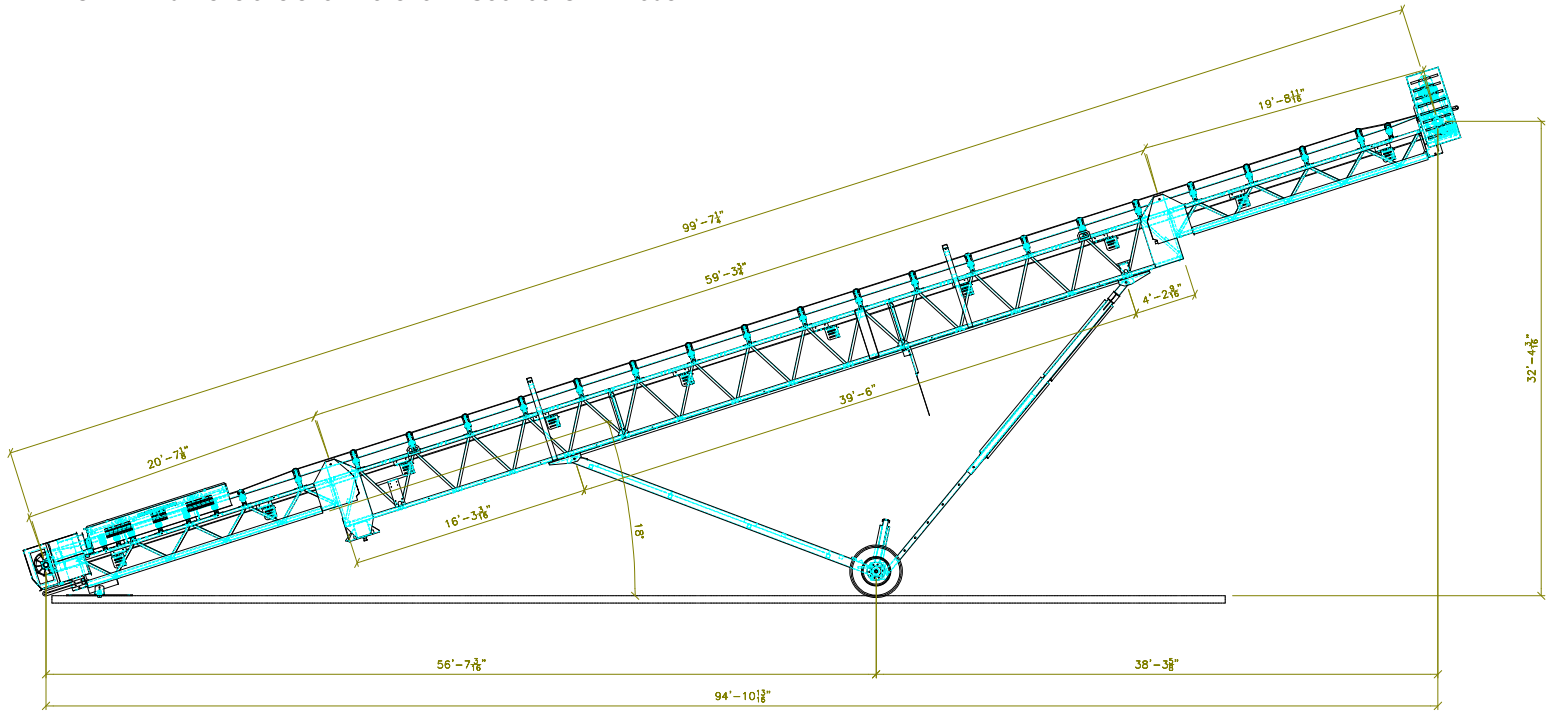
AVAILABLE CONVEYOR OPTIONS

- AR400 Skirtboard Liners
- 1 1/2HP Or 3HP Power Travel Drive
- Waterline Dust Suppression Kit

MELLOTT®

TECHNICAL DATA – MC OTR (OVER-THE-ROAD) – 80'-100'

NOTE: All dimensions shown are for MC36100-OTR Model.



CONVEYOR

- Max Incline Angle.....18°
- Max Head Pulley Elevation 80FT/100FT26'-10" / 32'-4"
- Maximum Capacity.....550-600 STPH

PHYSICAL CHARACTERISTICS (CONVEYOR ONLY)

- Overall Length.....83'-10 1/2" - 107'-3 15/16"
- Overall Width.....BW+12-1/2"
- Overall Depth.....3'-6"

Total Average Unit Weight (Approximate)..... 14,508-17,070 lbs

MAIN OFFICE
100 MELLOTT DRIVE
WARFORDSBURG, PA 17267

SOUTHERN SERVICE CENTER
169 MACHINE SHOP ROAD
MARION, NC 28752

CUSTOMER SERVICE HOTLINE: 800-634-5634 ■ EMAIL: SALES@MELLOTTSCOM

VISIT US @ WWW.MELLOTTCOMPANY.COM