

# ULTRAMAX<sup>®</sup> 1400-OC

This highly portable impactor plant is one of the most durable, reliable, and versatile plants for your larger-sized jobs.

## PRIMARY FEATURES

- 1 Discharge material feeds to a separate conveyor coming out of the side of the crusher at a 90-degree angle.
  - » Available in-line electro-magnet on side-discharge conveyor.
  - » Hydraulic lift and leveling system enables quick set up and tear down by using the hydraulic run-on legs.
- 2 Totally self-contained, reliable diesel/ electric or all-electric power. You won't have to worry about hydraulic leaks and failures shutting you down.
  - » Features the industry's first LIFETIME ROTOR WARRANTY on its solid-steel, three-bar, sculptured rotor—the industry's heaviest—to keep you up and crushing.\*

\* North America only.



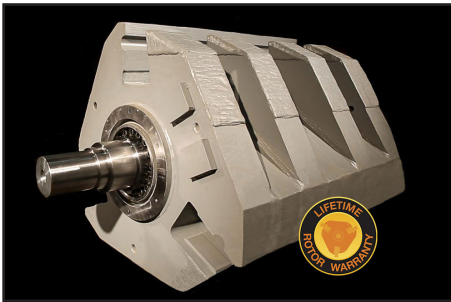
## ADDITIONAL FEATURES

- » Replaces dual crusher systems for a much lower initial investment and for greatly reduced maintenance, fuel and transportation costs.
- » Features unique two-step, 5' grizzly deck to remove fines before crushing.
- » Features standard grizzly bypass chute and available cross-belt conveyor with flop gate to allow for either removal of the material that passes through the grizzly deck for stockpiling or blending back with the crushed material.
- » Utilizes side-discharge conveyor with receiving hopper and replaceable liners, optional full-length skirtboards and available, in-line electro-magnet that stays on for trailer transport.
- » Side-discharge conveyor is available in road-portable version.
- » Includes removable electrical control panel featuring pre-wired receptacles for radial stackers.
- » Manage the feeder speed for complete control of the flow of material into the impactor with Variable Frequency Drive (VFD).
- » Includes wireless remote control for the feeder shutdown and all motor stop.



# ULTRAMAX® 1400-OC

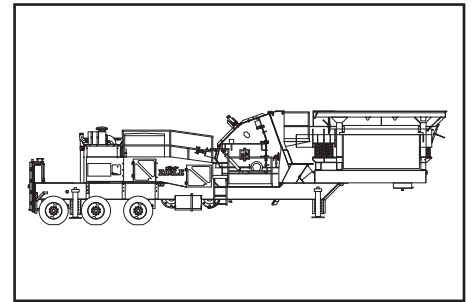
OC refers to a separate discharge conveyor coming out of the side of the impactor plant at a 90-degree angle.



Solid-steel, three-bar, sculptured rotor with LIFETIME ROTOR WARRANTY, North America only.



Available in-line electro-magnet on side-discharge conveyor.



## 1400-45 OC PORTABLE IMPACTOR PLANT TECHNICAL SPECIFICATIONS\*

Model	
Impactor	UM-45
Operating Length	50' 0" / 15.2M
Gross Weight	123000lbs / 55800kg
Travel Length	44' 6" / 13.6M
Travel Width	11' 11" / 3.6M
Travel Height	13' 5" / 4.1M
Feed Hopper Capacity	19yd <sup>3</sup> / 14.5M <sup>3</sup>
Feed Hopper Capacity (Tons)	25.7T / 23.3MT
Vibrating Feeder	18' x 57" / 5.5M x 1.5M
Feeder Grizzly Deck	60" long 2 step / 1524mm 2 step
On-Plant Power Supply Diesel	500HP / 373kW diesel engine and 200kW generator or
On-Plant Power Supply Electric	400HP / 298kW all-electric power
Side-discharge conveyor Width	42" / 1067mm
Discharge Conveyor Height	9' 3" / 2816mm

## ULTRAMAX® IMPACTOR MODEL AND SPECIFICATIONS\*

Model	Diameter x Width		Width x Height		Approx. Weight (lbs / kg)	Rotor Weight (lbs / kg)	Production Capacity**
	Rotor (Inches / Millimeters)	Feed Opening (Inches / Millimeters)	Power Required (HP / kW)				
UM-45	50 x 56 / 1270 x 1422	56 x 35 / 1422 x 889	300 - 400 / 224 - 298		40100 / 18200	17600 / 8000	Varies by application.

\*Design specifications subject to change without notice.

\*\*Contact your Eagle Sales Representative with your specific application for anticipated production capacity.

Call 800-25-EAGLE (800-253-2453) or visit [www.EagleCrusher.com](http://www.EagleCrusher.com)  
525 South Market St., Galion, OH 44833 • 419-468-2288 • fax: 419-468-4840 • email: [sales@eaglecrusher.com](mailto:sales@eaglecrusher.com)

Rev 03/2023

**EAGLE CRUSHER®**

©2023 Eagle Crusher Company, Inc.