



# ECOSTACK



material handling



# SAVE LABOR. SAVE FUEL. SAVE WEAR. SAVE TIME.

Aggregate from a crusher. Compost from a screen. Wood from a shredder. Wherever material needs to be moved or stockpiled, EcoStack conveyors are built for the task. Fit more inventory in less space with efficient EcoStack material handling.

## Stack higher. Not wider.

Conveyors are the lifeblood of any processing operation. Adequate conveyor capacity maintains peak throughput, provides essential flexibility and allows maximum inventory storage in a constrained amount of space. EcoStack conveyors are engineered to provide the most efficient performance for any material handling application.

Stockpile higher and faster with widths to 48" and lengths to 150'. Stack non-stop with powerful radial action. Work worry-free with a hydraulic wrap drive and eliminate unnecessary expenses with ultra-durable construction. Reduce material handling, lower labor costs and save wear and tear on your loaders with EcoStack.

## Wheeled stacking conveyors—a mobile solution.

For operations with forgiving terrain, wheeled conveyors are a convenient option. Like all EcoStack conveyors, they are extremely easy to set up with their hydraulic folding. Features unique to wheeled trackers include a swing beam radial axle and a road legal package that includes lights, fenders, LED flashers, a King-Pin coupling and air brakes. But just because they're more mobile doesn't mean they're not tough—these machines boast a powerful (and efficient) drive system that utilizes 270 degrees of the drive pulley for maximum torque.

## Tracked stacking conveyors—for challenging terrain.

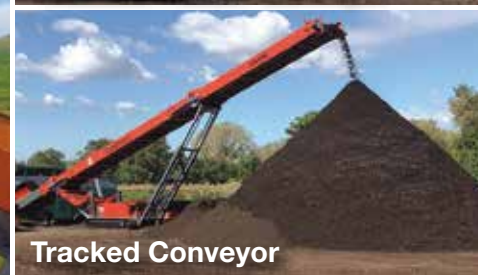
EcoStack tracked conveyors tackle even the most challenging terrain with their heavy-duty Strickland tracks. Also easy to set up with their hydraulic folding, tracked conveyors offer dust covers, a cross brand magnet, hardox abrasion resistant plates in hopper and a chevron belt. Moving the machine is simple—you can either use the standard dog lead remote or upgrade to the wireless remote. EcoStack tracked conveyors are the machines you need to add versatility to your worksite regardless of the conditions.



Tracked Conveyor



Tracked Feeder Conveyor



Tracked Conveyor



Feeder Stacker Conveyor

## INNOVATIVE FEATURES ON ECOSTACK CONVEYORS



The hydraulic wrap drive provides maximum torque on the wheeled conveyors.



Easily transport any conveyor on the street with an optional road-legal package.



Heavy-duty tracks allow the conveyors to maneuver over rough and muddy terrain.



High-quality vulcanized belts deliver durable, long-lasting performance.



Satisfy any material handling need with models ranging in length from 50' to as long as 150'.



For a specific application that perfectly fits any need, custom conveyors and builds are available.

# ECOSTACK MODELS AND SPECS

## WHEELED STACKING CONVEYORS

	<b>5032W</b>	<b>6032W</b>	<b>8036W</b>	<b>10036W</b>	<b>12536W</b>
OPERATING LENGTH	50'	60'	80'	100'	125'
BELT WIDTH	32"	32"	36"	36"	36"
HOPPER VOLUME	N/A	N/A	2.5 yd <sup>3</sup>	2.5 yd <sup>3</sup>	2.5 yd <sup>3</sup>
ENGINE POWER	optional	optional	37hp or 50hp	50hp	74hp
STOCKPILE CONE	390 yd <sup>3</sup>	548 yd <sup>3</sup>	1,701 yd <sup>3</sup>	3,395 yd <sup>3</sup>	4,807 yd <sup>3</sup>
STOCKPILE AT 180°	2,976 yd <sup>3</sup>	4,215 yd <sup>3</sup>	13,076 yd <sup>3</sup>	26,115 yd <sup>3</sup>	36,976 yd <sup>3</sup>

## TRACKED STACKING CONVEYORS

	<b>6536K</b>	<b>8036K</b>	<b>8048K</b>	<b>10048K</b>
OPERATING LENGTH	65'	80'	80'	100'
BELT WIDTH	36"	36"	48"	48"
HOPPER VOLUME	N/A	N/A	up to 6.2 yd <sup>3</sup>	up to 6.2 yd <sup>3</sup>
ENGINE POWER	50hp	74hp	74hp	100hp
STOCKPILE CONE	1,100 yd <sup>3</sup>	1,889 yd <sup>3</sup>	1,983 yd <sup>3</sup>	3,130 yd <sup>3</sup>
TRACK DIMENSIONS	8' 3" x 16"	10' x 16"	10' x 16"	13' 2" x 16"

## DIRECT FEED STACKING CONVEYORS

	<b>7048</b>	<b>8048</b>	<b>9036W</b>
OPERATING LENGTH	70'	80'	90'
BELT WIDTH	48"	48"	36"
HOPPER VOLUME	13 yd <sup>3</sup>	13 yd <sup>3</sup>	7 yd <sup>3</sup>
ENGINE POWER	100hp	130hp	100hp
STOCKPILE CONE	1,790 yd <sup>3</sup>	1,860 yd <sup>3</sup>	1,836 yd <sup>3</sup>
TRACK DIMENSIONS	10' x 16"	11' 6" x 16"	N/A – wheeled

## COMMON MODELS



**ECOSTACK**



[ECOVERSE.NET](http://ECOVERSE.NET)

**440-937-3225**